

# Smart Cab

## A Multi-Purpose Highly Versatile Cabinet

The industry leader for high tech datacom enclosures feature rich and preferred by knowledgeable professionals worldwide.

Upgradeable to ServerSmart specification when needed. This leading edge enclosure combines advanced features to aid efficiency and lower the cost of both installation and life time ownership.

### Benefits & features

- International mounting posts enable rapid and simple equipment installation, with mixed depth solutions
- Extensive cable entry through multiple cable glands in roof
- Exceptional base access
- Quick change fan tray option (compatible with all cable entry features)
- Optional; overhead, roof mounted Cable Raceway simplifies cable infrastructure (no more ceiling hung cable tray)
- Optional; RAFT frame, replaces floor tile, providing maximum cable entry, speeds and simplifies installation (no more tile cutting)  
RAFT provides simple stabilisation of cabinet
- A robust rack for high loads
- Easy access with 180°/270° opening doors and wardrobe door options for narrow aisles
- High security
- CannonGuard electronic upgrades available

### Standard specification

- Six heights: 25U, 33U, 42U, 45U, 47U, 52U
- Three widths: 600mm, 700mm, 800mm
- Two depths: 600mm, 800mm
- Four adjustable 19-inch mounting posts allowing universal equipment mounting
- Two drop-in ribbed and lockable side panels
- Vented frame glass front, door supplied with swing handle lock
- Vented frame non perforated steel rear door; supplied with swing-handle lock - for more details see door and lock page 4.1 (non-locking versions available)
- All doors open 180° when bayed and 270° at end of bay or when stand-alone
- Quick-Release hinges on all doors
- Multiple cable entry glands in roof, of moulded finger type
- Maximum cable access through base
- Four transit castors supplied fitted



Available  
assembled  
or flat pack

### Finish

Standard: Powder painted Velvet Black to RAL 9005  
Other colours including grey available.

### Technical information

- Manufactured (where applicable) to BS.EN60950 2002, IEC 60297, EIA-310-D, UL94V0
- Load rating: 1000kg static (sited directly on floor)

## Next Day Delivery on most sizes

Size conversions: 1U = 44.45mm = 1 3/4"    600mm = 24"    700mm = 28"    800mm = 32"    1kg = 2.2lbs

# Smart Cab

## A Multi-Purpose Highly Versatile Cabinet

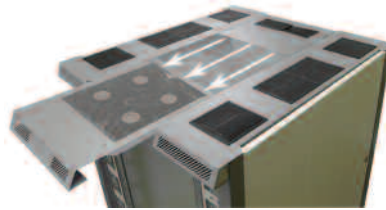
### Options/upgrades - see Accessories section

- Vented framed steel doors or MaxiVent perforated doors - see page 4.1
- Vertically split wardrobe doors - see page 4.2
- QuickChange zero-U, roof mounted fan unit: 2, 4 or 6 Fans - see page 6.10
- Power Distribution Units - see page 7.1
- Zero 'U' Power Distribution options - see page 8.11
- Resilient dual source transfer switches - see page 7.5
- Earthing bar options available including full height versions - see page 7.6/7.7
- Base blanking plate options available (steel, brush strip or diaphragm)
- Side panel internal security bars - see page 4.6
- Non-vented roof available
- 19-inch blank panels - see page 6.9
- RAFT and Raceway compatible - see Section 3
- Air filter options (on request)

### Air flow control

Blank inserts are available to replace cable glands in the roof, to ensure airflow passes front to back through cabinet in critical situations.

- CannonGuard upgrades available: remote system management/remote access control/high capacity cooling and remote environmental control/remote power management/local condition monitoring - see Section 8
- Vertical patching column (zero 'U') simplifies and reduces cabling, avoids air-flow obstruction, maximises equipment density and speeds installation - see page 6.13
- Cooling upgrades (see 'CannonGuard' and 'CoolCab' sections)
- Lifting eyes (roof mounted) - see Section 6.12
- Smart Trim for doors & side panels available - see page 4.3



Images show QuickChange fan unit fitted (ServerSmart Cab/SmartCab versions only).

Please note that ServerSmart Cab/SmartCab roof section is plain as standard MaxiVent perforated roof section is supplied when roof mounted fan units are fitted.

### Order codes - **Smart Cab** Assembled

600mm wide x 600mm deep			700mm wide x 600mm deep			800mm wide x 600mm deep		
Height	Weight (approx.)	Order code	Height	Weight (approx.)	Order code	Height	Weight (approx.)	Order code
25U	60kg	CABS256060	25U	64kg	CABS257060	25U	80kg	CABS258060
33U	72kg	CABS336060	33U	77kg	CABS337060	33U	85kg	CABS338060
42U	85kg	CABS426060	42U	91kg	CABS427060	42U	95kg	CABS428060
45U	91kg	CABS456060	45U	97kg	CABS457060	45U	104kg	CABS458060
47U	97kg	CABS476060	47U	114kg	CABS477060	47U	112kg	CABS478060
52U	114kg	CABS526060	52U	132kg	CABS527060	52U	129kg	CABS528060

600mm wide x 800mm deep			700mm wide x 800mm deep			800mm wide x 800mm deep		
Height	Weight (approx.)	Order code	Height	Weight (approx.)	Order code	Height	Weight (approx.)	Order code
25U	80kg	CABS256080	25U	72kg	CABS257080	25U	90kg	CABS258080
33U	85kg	CABS336080	33U	85kg	CABS337080	33U	95kg	CABS338080
42U	95kg	CABS426080	42U	95kg	CABS427080	42U	112kg	CABS428080
45U	104kg	CABS456080	45U	111kg	CABS457080	45U	119kg	CABS458080
47U	112kg	CABS476080	47U	115kg	CABS477080	47U	124kg	CABS478080
52U	129kg	CABS526080	52U	133kg	CABS527080	52U	142kg	CABS528080

**For FLAT PACK versions please replace the CABS prefix with 020S**  
**e.g. Smart Cab 42U 800 x 800 assembled = CABS428080. Flat Pack = 020S428080.**

**Size conversions: 1U = 44.45mm = 1 3/4"    600mm = 24"    700mm = 28"    800mm = 32"    1kg = 2.2lbs**