

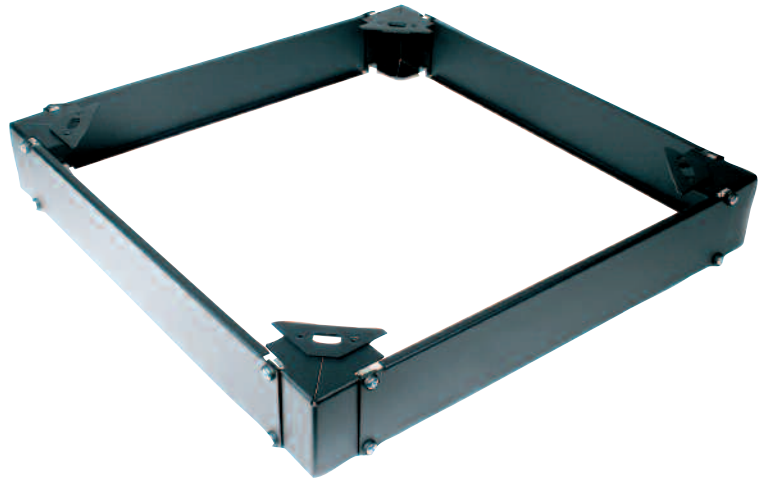
Miscellaneous Accessories

Modular Plinth Kits

- Cannon modular plinths fit beneath the cabinet to allow cable to feed from both sides and the rear
- Plinths consist of four rugged corner supports and infill panels to suit all footprints of the cabinet range. The front and rear panels and side panels are plain
- The nature of the modular construction allows simple and easy access, also the possibility of retrofitting the plinth, should this be required

Finish: Painted Velvet Black to RAL 9005 as standard. Other colours are available on request.

Cannon Modular Plinths can be used with ServerSmart Cab, Smart Cab and Smart Net cabinets.



Modular plinth shown assembled, but supplied in flat pack kit form.

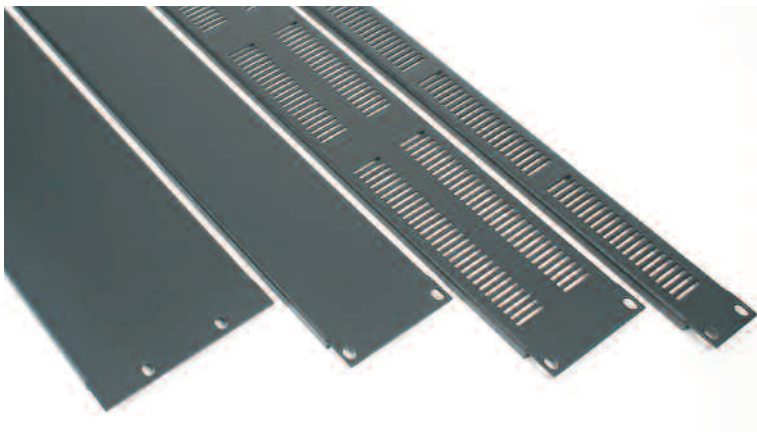
Order Codes

600mm wide		800mm wide	
Cabinet Footprint	Order Code	Cabinet Footprint	Order Code
600 × 600	335B02606005	800 × 600	335B02806005
600 × 800	335B02608005	800 × 800	335B02808005
600 × 900	335B02609005	800 × 900	335B02809005
600 × 1000	335B02609905	800 × 1000	335B02809905

19-inch Blanking/Vented Panels

Cannon front panels are plain or vented as required and are provided with standard 19-inch fixing holes.

Material & Finish: 1.5mm steel, painted Velvet Black to RAL 9005 as standard. Other colours are available on request.



Order Codes

Size	Description	
	Blanking Panels	Vented Panels
1U	166C01600000	167C01600000
2U	166C02600000	167C02600000
3U	166C03600000	167C03600000
4U	166C04600000	167C04600000
5U	166C05600000	167C05600000
6U	166C06600000	167C06600000
7U	166C07600000	167C07600000
8U	166C08600000	167C08600000
9U	166C09600000	167C09600000
10U	166C10600000	167C10600000
11U	166C11600000	167C11600000
12U	166C12600000	167C12600000

Size conversions: 1U = 44.45mm = 1 3/4" 600mm = 24" 700mm = 28" 800mm = 32" 1 kg = 2.2lbs

Miscellaneous Accessories

Mounting Posts

Cannon mounting posts are available in a variety of sizes to suit various situations and to offer complete mounting flexibility of equipment.

Please note: Split height mounting posts may be fitted to accommodate varying equipment depths at front or rear.

Finish:

Painted Velvet Black to RAL 9005 as standard.
Other colours are available on request.



Order Codes

Cabinet height	Order Code
6U	292C03000006
9U	292C03000009
12U	292C03000012
15U	292C03000015
18U	292C03000018
21U	292C03000021
25U	292C03000025
33U	292C03000033
42U	292C03000042
45U	292C03000045
47U	292C03000047

Intermediate Mounting Posts

Cannon shelf mounting posts offer support for alternative depths of equipment, such as shelves and/or support runners, positioned between standard Cannon mounting posts.

Finish: Painted Velvet Black to RAL 9005 as standard.
Other colours are available on request.



Order Codes

Height	Order Code
25U	293C01000025
33U	293C01000033
42U	293C01000042
45U	293C01000045
47U	293C01000047

'U' Height Identification Labels

Cannon 'U' height identification labels offer a simple-to-read and easy-to-fix identification system for all standard cabinet heights. The self-adhesive strip is designed to fit the side flange of a cabinet mounting post where it is discrete but easy to access and provides quick and easy equipment positioning.

The identification strip offers standard cabinet height breaks, 'U' height position markers and may be cut to suit any height of cabinet up to a maximum of 48U.



Order Code

Description	Order Code
'U' Height Label	LA0050

Document Wallet

Cannon plastic, self-adhesive document wallets can be fitted to the inside of any enclosure door in any position allowing easy storage and access of documentation relating to the components within the cabinet.

Pocket size:

232mm(w) x 220mm(h) - suits A4.

Materials & Finish:

Moulded ABS plastic, Black.



Order Code

Description	Order Code
Document Wallet	CA020

Front Panel Fixings

Cannon front panel fixings consist of cagenuts, cup washers and pan head Pozidriv screws – supplied in a bag of 25/50/100 sets.

The thread size of the cagenuts and screws is M6.



Order Codes

Quantity	Order Code
25	KP0276
50	KP0004
100	KP0275

Size conversions: 1U = 44.45mm = 1 3/4" 600mm = 24" 700mm = 28" 800mm = 32" 1kg = 2.2lbs

Miscellaneous Accessories

Cage Nut Insertion/Extraction Tool

Simple and easy to use, this aids the insertion or extraction of cage nuts from the Cannon mounting posts.



Order Code

Description	Order Code
Cage Nut Tool	CA021

Quick-Fit Buttons (1/8 turn)

Quick-Fit Buttons fit Cannon Quick-Fit Accessories



Order Code

Size	Order Code
Pack of 20	KP0120
Pack of 100	KP0121

Cabinet Joining/Baying Kit

Cannon cabinet joining kits offer a very simple solution where cabinets are required to be joined, or bayed together. One joining kit will bay two cabinets together.

Order Code

Description	Order Code
Joining/Baying Kit	KP0236



Castors

Please note that all cabinets are normally supplied with light duty castors (not shown here). Cannon castors are easily fitted to the base of any Cannon cabinet. Medium duty castors are supplied in a choice of two weight carrying capacities, either lockable or non lockable. It is recommended that two of the castors in a set of four are lockable and that these should be fitted at the front of the cabinet.

Supplied: Individually with fixings.

Order Codes

Castor type	Max. load each	Order code
Non-locking, medium duty	75kg	CA001
Locking, medium duty	75kg	CA002
Non-locking, heavy duty	160kg	CA029



Non-locking medium duty castors

Castor height 70mm.



Locking medium duty castors

Castor height 70mm.



Non-locking heavy duty castors

Castor height 70mm.

Screw Jacks



50mm diameter

Cannon adjustable jacking feet fit easily into the base of any Cannon cabinet to allow the leveling of cabinets on uneven surfaces. Thread size M10x35.

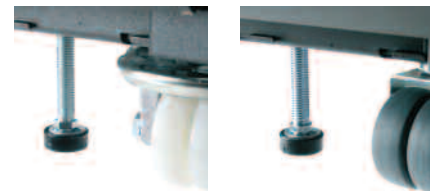
Supplied: In a pack of 4.

Order Code

Description	Max. load each	Order code
Screw Jacks 50mm	500Kg	CA010

Cannon 25mm Screw jacks are for use with the castors. These screw jacks when fully retracted, allow castors to pivot 360°.

Supplied: In a pack of 4.



25mm diameter.

Order Code

Description	Max. load each	Order code
Screw Jacks M10x70	500Kg	CA011
Screw Jacks M10x100	500Kg	CA018

Size conversions: 1U = 44.45mm = 1 3/4" 600mm = 24" 700mm = 28" 800mm = 32" 1kg = 2.2lbs

Miscellaneous Accessories

IU 19" Brush Strip Panel

Cannon IU Brush Strip Cable Entry Panels fit directly onto the 19" equipment mounting posts of Cannon cabinets.

The panels are 1U high and have been designed to provide a convenient and tidy alternative to horizontal cable management when an excess of cable might be involved, or where cables need to be routed to the rear of equipment. Slots have been incorporated in the 100mm deep rearward facing support tray for cable lacing purposes. The brush strip gives a neat and tidy appearance to the finished configuration and reduces the ingress of dust.

Finish: Powder painted velvet black to RAL 9005.



Order code

Description	Order Code
IU 19" Brush Strip Panel	395B01601002

Trans-shipment Base

- Standard size Euro pallets to allow safe and easy fork-lift and movement of cabinets, particularly when being transhipped
- Height of Trans-shipment base: 140mm
- Secured by bolting cabinet base directly to pallet through each of the four corners
- Pallet size: 800mm x 1200mm

Two options available

- Pallet only
- Pallet plus export packaging

Lifting eyes also available for cabinet roof to allow easy unloading of heavily populated cabinets from pallet.

Order code

Description	Order code
Pallet plus export packaging	PA07057
Pallet only	PA07057A



Lifting Eyes

Cannon lifting eyes for use when cabinets are required to be lifted into position; lifting eyes affix to the top of the cabinet - two on each side.

Must be fitted with the side panels removed.

Supplied: In set of four with fixings - can be factory fitted on request.

Finish: Powder painted velvet black to RAL 9005. Other colours available on request.

Recommended total lifting load: 500kg.



Order code

Description	Order code
Set of 4 Lifting Eyes	KP0010

Size conversions: 1U = 44.45mm = 1 3/4" 600mm = 24" 700mm = 28" 800mm = 32" 1kg = 2.2lbs

Miscellaneous Accessories

Infill Panels

The primary use of Cannon Infill Panels is to maintain 19-inch equipment practice in various widths of cabinets. Additional fixing points throughout the height of the Infill Panels provide useful cable management mounting options. See pages 5.7 - 5.9.

Infill Panel Mouldings are available as part of the Air-Lok System to restrict air-flow whilst allowing cable access. See Air-Lok catalogue.

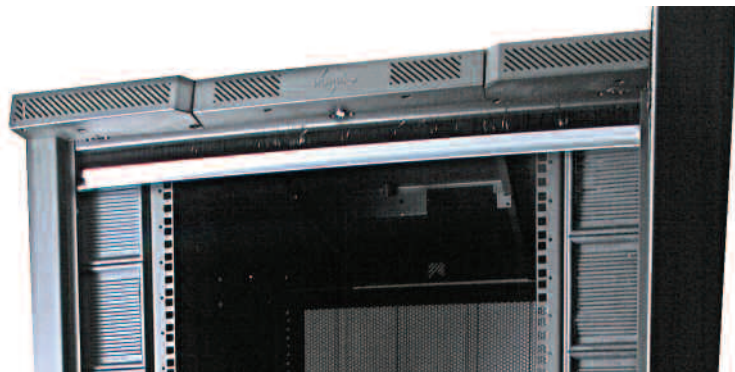
Finish: Powder painted velvet black to RAL 9005. Other colours available on request.

Please note: Cannon cabinets are supplied with Infill Panels as standard:

700mm wide cabinet supplied with 50mm Infills.
800mm wide cabinet supplied with 100mm Infills.

Order Codes

Size	Description	
	Blanking Panels	Vented Panels
12U	199C00050012	201C00100012
15U	199C00050015	201C00100015
18U	199C00050018	201C00100018
25U	199C00050025	201C00100025
27U	199C00050027	201C00100027
33U	199C00050033	201C00100033
39U	199C00050039	201C00100039
42U	199C00050042	201C00100042
45U	199C00050045	201C00100045
47U	199C00050047	201C00100047
52U	199C00050052	201C00100052



Infill Panels with Cut Outs for Power Distribution Units

Infill panels supplied with 3 x cut outs to accommodate the vertical mounting of 19" power distribution units without infringing on the U height space within the cabinet.

Order Codes

Description	Order Code
42U Infill with Cut Outs	202C42100202
45U Infill with Cut Outs	202C45100202
47U Infill with Cut Outs	202C47100202



Size conversions: 1U = 44.45mm = 1 3/4" 600mm = 24" 700mm = 28" 800mm = 32" 1kg = 2.2lbs